

BALL VALVE 3 PIECE NPT / BSP 1000 PSI WOG



INVESTMENT CASTING
SS 3 PIECE DESIGN FULL BORE BALL VALVE
SCREWED END, SOCKET WELD END (1000WOG)

Full Port Three - Pieces Ball Valve

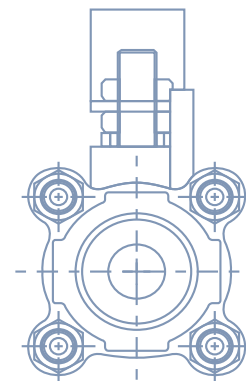
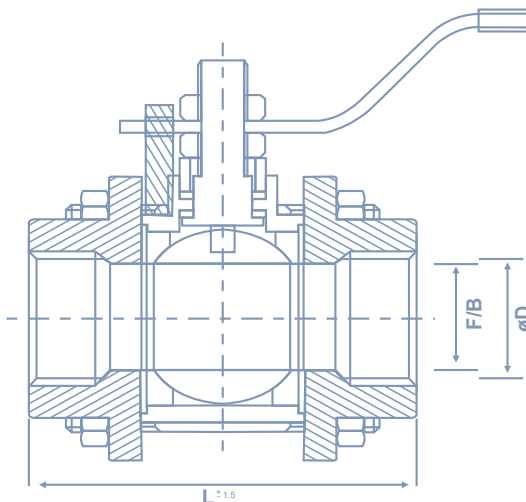
- Dynamic loading on stem packing , ensures a tight seal through varying pressure and temperature conditions, reducing maintenance costs and extending service life.
- End Cap Alignment Step; Ensures easy and proper alignment between mating parts.
- Full Port Design: Improves flow resulting in increased process efficiencies.
- 3-Piece Construction : Easy to repair.
- Stem is bottom loaded to prevent removal when valve is in service.
- Locking Device: Enables plant personnel to secure valve in open or closed position when manually operated

Specification of Three Pieces Ball Valve

- Working Pressure: 1000PSI WOG
- Temperature Range : 20 ---232C
- Suitable medium: Water, Oil, Air and some corrosive liquid.
- Thread kinds : NPT, BSPT, BSP. Din 259/2999

MATERIAL OF CONSTRUCTION

No.	DESCRIPTION	SPECIFICATION
1.	BODY	ASTM A - 351 GRADE CF 8M / CF 8
2.	END CAP	ASTM A - 351 GRADE CF 8M / CF 8
3.	BALL	SS316 / SS 304
4.	SEAT RING	PTFE
5.	BODY SEAL	PTFE
6.	THRUST WASHER	PTFE
7.	STEM SEAL	SS316 / SS 304
8.	STEM	SS304 / SS 316
9.	GLAND NUT	SS304
10.	HANDLE WASHER	SS304
11.	HANDLE NUT	SS304
12.	HANDLE	SS304
13.	HANDLE COVER	PLASTIC



DIMENSIONS OF 3 PC/SCR END IN MM

Size	L	F/B	Ends D
15	70	12.5	1/2"
20	74	19	3/4"
25	88	25	1"
40	102	38	1/2"
50	117	51	2"

TEST PRESSURE (HYDROSTATIC)

Class	150 lbs	300 lbs
Body	450 PSIG or 31.5 Kg/cm ² g	1100 PSIG or 77 Kg/cm ² g
Seat	315 PSIG or 22 Kg/cm ² g	800 PSIG or 56 Kg/cm ² g

TEST PRESSURE (PNEUMATIC)

Class	150 lbs
Seat	80 PSIG or 5.5 Kg/cm ² g

BALL VALVES